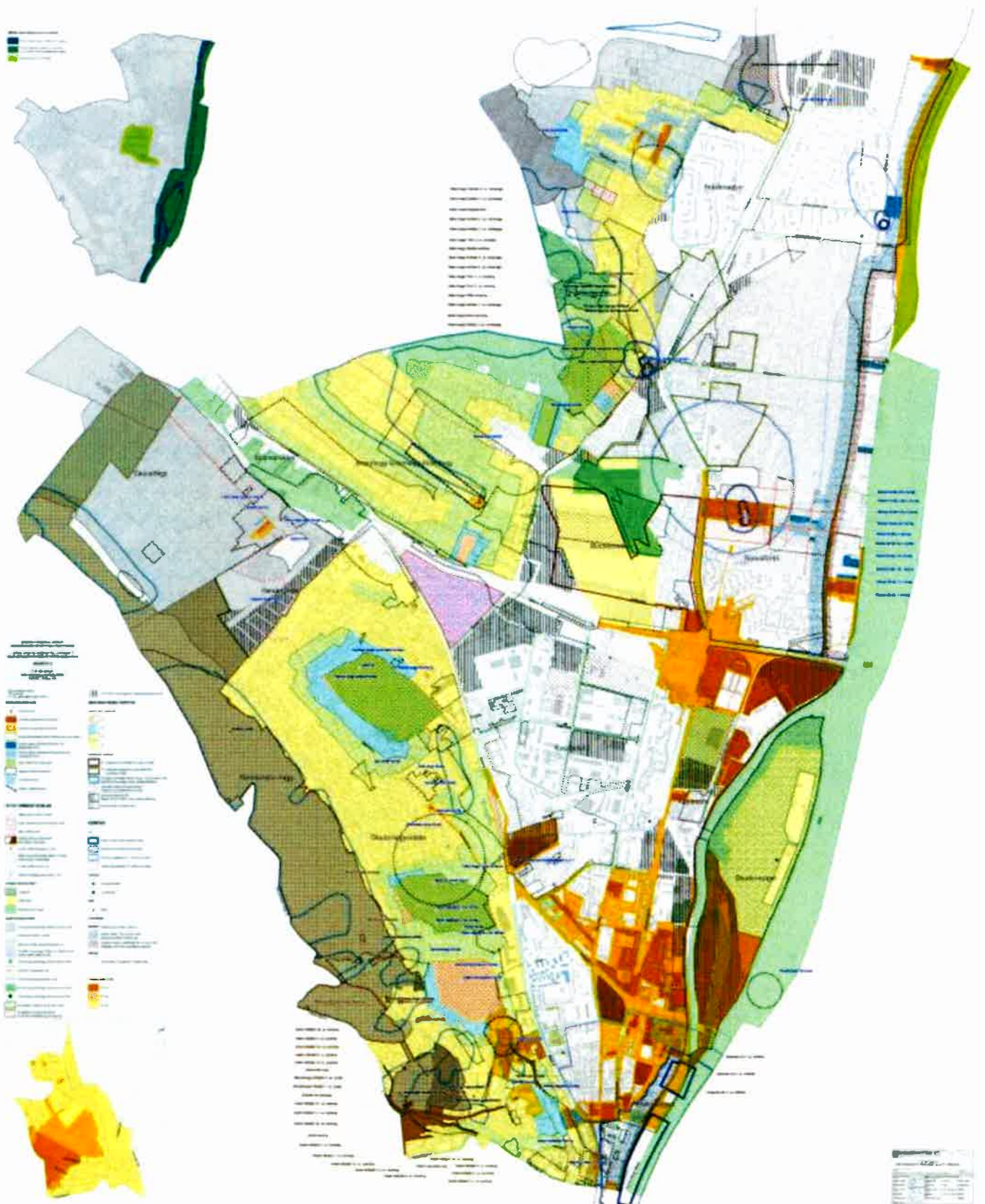
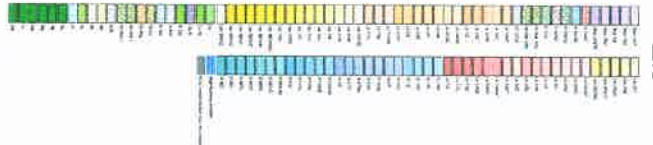


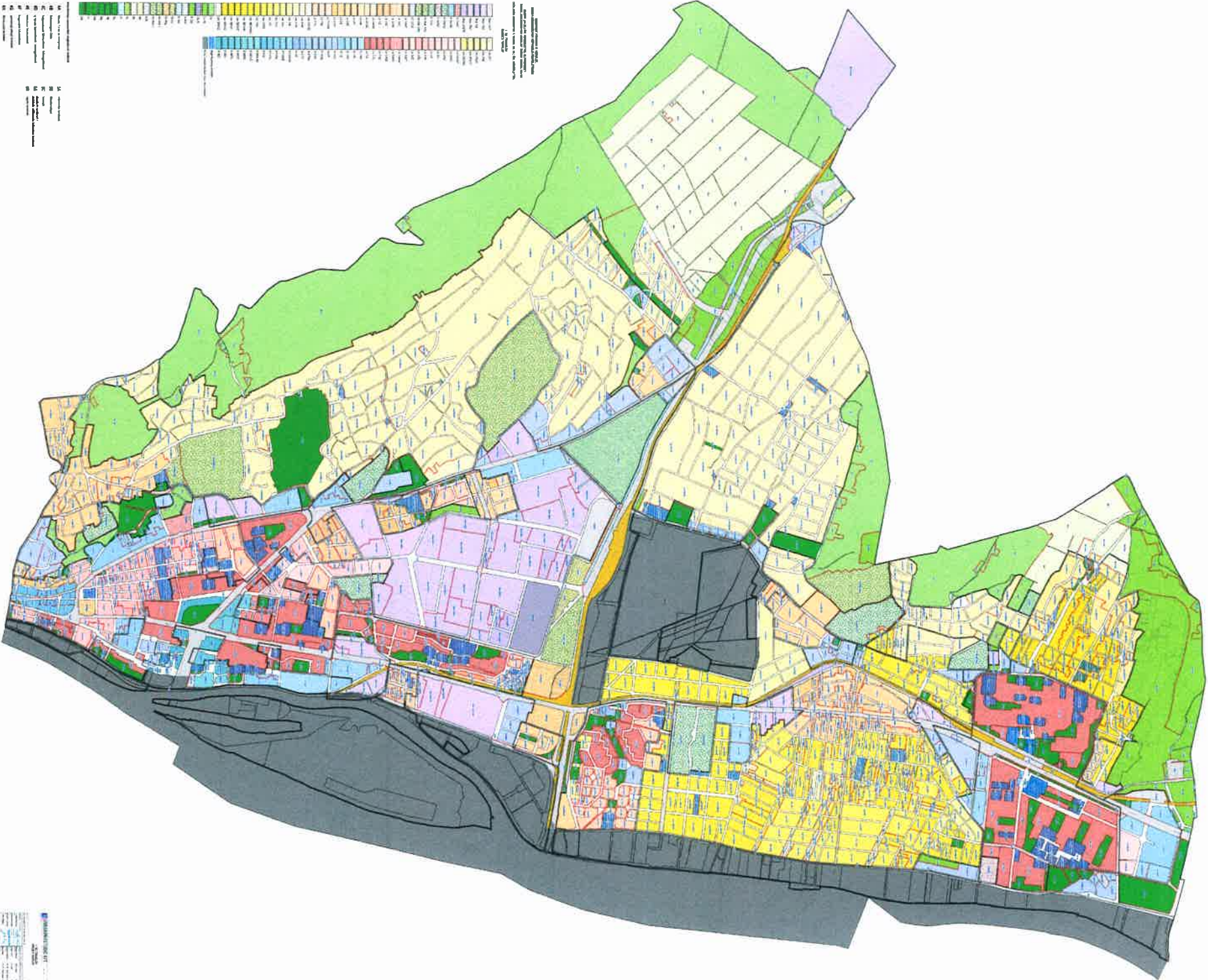
3. melléklet a 16/2024. (IX. 26.) önkormányzati rendelethez



100' 200' 300' 400' 500' 600' 700' 800' 900' 1000'  
 1:10,000  
 1:20,000  
 1:30,000  
 1:40,000  
 1:50,000  
 1:60,000  
 1:70,000  
 1:80,000  
 1:90,000  
 1:100,000  
 1:120,000  
 1:150,000  
 1:200,000  
 1:250,000  
 1:300,000  
 1:400,000  
 1:500,000  
 1:600,000  
 1:700,000  
 1:800,000  
 1:900,000  
 1:1,000,000  
 1:1,200,000  
 1:1,500,000  
 1:2,000,000  
 1:2,500,000  
 1:3,000,000  
 1:4,000,000  
 1:5,000,000  
 1:6,000,000  
 1:7,000,000  
 1:8,000,000  
 1:9,000,000  
 1:10,000,000  
 1:12,000,000  
 1:15,000,000  
 1:20,000,000  
 1:25,000,000  
 1:30,000,000  
 1:40,000,000  
 1:50,000,000  
 1:60,000,000  
 1:70,000,000  
 1:80,000,000  
 1:90,000,000  
 1:1,000,000,000



1. Residential Single-Family  
 2. Residential Medium-Density  
 3. Residential High-Density  
 4. Commercial  
 5. Industrial  
 6. Office  
 7. Public Use  
 8. Institutional  
 9. Community Center  
 10. Community Office  
 11. Community Office/Residential  
 12. Community Office/Industrial  
 13. Community Office/Office  
 14. Community Office/Office/Residential  
 15. Community Office/Office/Industrial  
 16. Community Office/Office/Office/Residential  
 17. Community Office/Office/Office/Industrial  
 18. Community Office/Office/Office/Office/Residential  
 19. Community Office/Office/Office/Office/Industrial  
 20. Community Office/Office/Office/Office/Office/Residential  
 21. Community Office/Office/Office/Office/Office/Industrial  
 22. Community Office/Office/Office/Office/Office/Office/Residential  
 23. Community Office/Office/Office/Office/Office/Office/Industrial  
 24. Community Office/Office/Office/Office/Office/Office/Office/Residential  
 25. Community Office/Office/Office/Office/Office/Office/Office/Industrial



100' 200' 300' 400' 500' 600' 700' 800' 900' 1000'  
 1:10,000  
 1:20,000  
 1:30,000  
 1:40,000  
 1:50,000  
 1:60,000  
 1:70,000  
 1:80,000  
 1:90,000  
 1:100,000  
 1:120,000  
 1:150,000  
 1:200,000  
 1:250,000  
 1:300,000  
 1:400,000  
 1:500,000  
 1:600,000  
 1:700,000  
 1:800,000  
 1:900,000  
 1:1,000,000  
 1:1,200,000  
 1:1,500,000  
 1:2,000,000  
 1:2,500,000  
 1:3,000,000  
 1:4,000,000  
 1:5,000,000  
 1:6,000,000  
 1:7,000,000  
 1:8,000,000  
 1:9,000,000  
 1:10,000,000  
 1:12,000,000  
 1:15,000,000  
 1:20,000,000  
 1:25,000,000  
 1:30,000,000  
 1:40,000,000  
 1:50,000,000  
 1:60,000,000  
 1:70,000,000  
 1:80,000,000  
 1:90,000,000  
 1:1,000,000,000