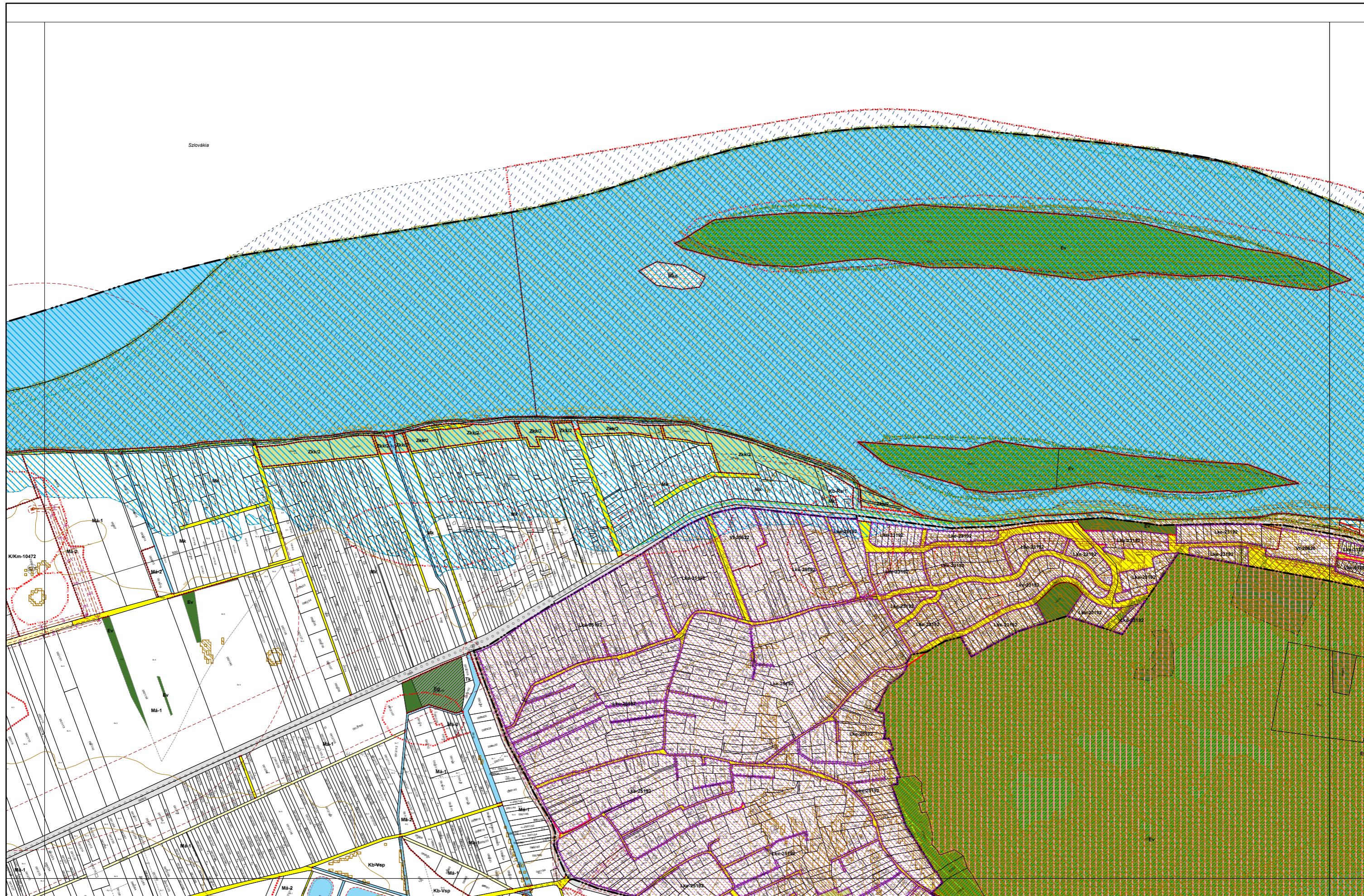
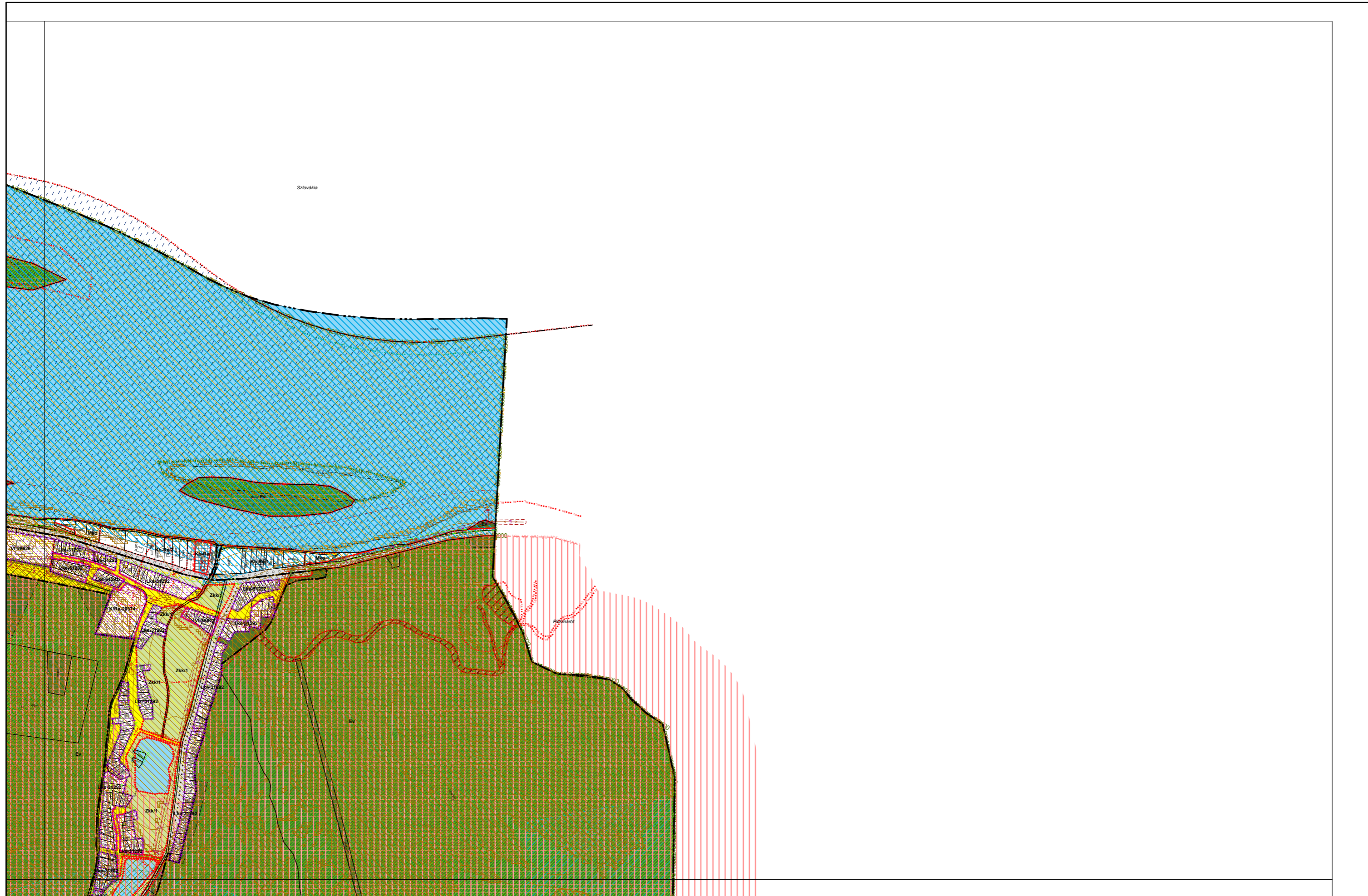


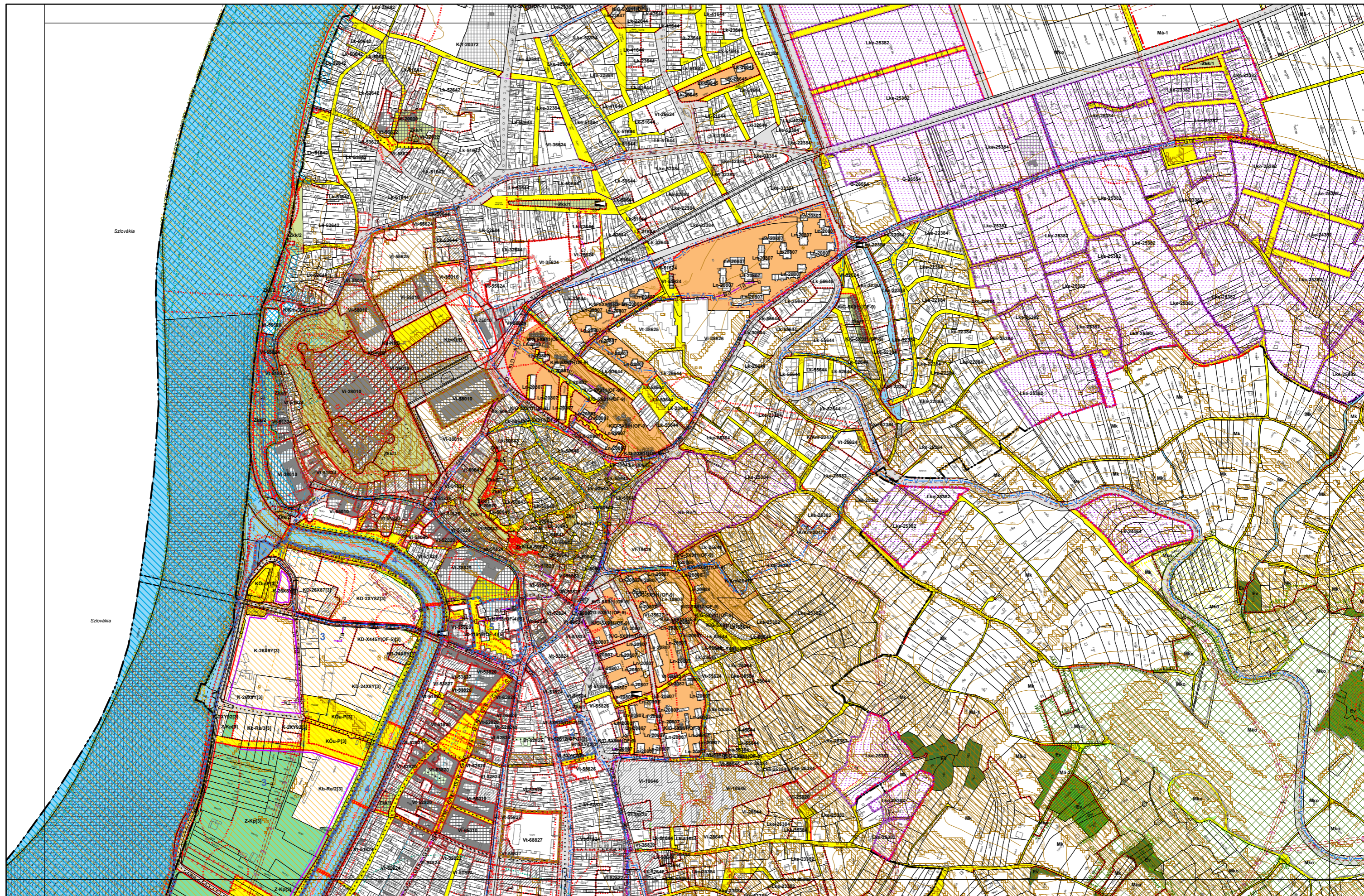
4. melléklet a 21/2023. (VI. 02.) önkormányzati rendelethez

Esztergom Megyei Jogú Város Külterületi Szabályozási Terve M=1:8000

01, 02, 03, 04, 05, 06, 07, 08, 09, 10, 11, 12, 13, 14, 15, 16, 17, 18, 19, 20, 21, 22, 23, 24, 25, 26, 27, 28,
29 számú tervlap

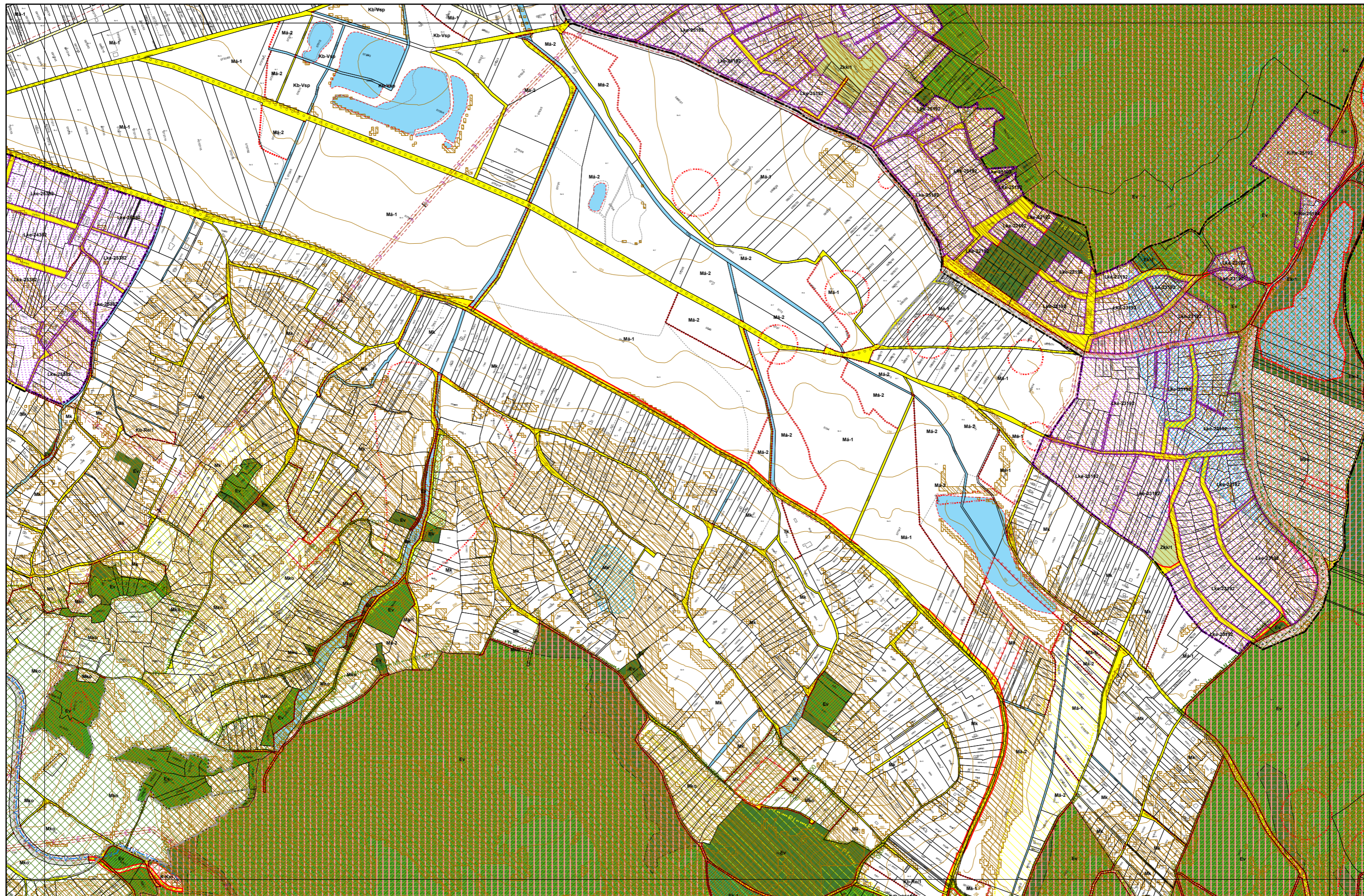






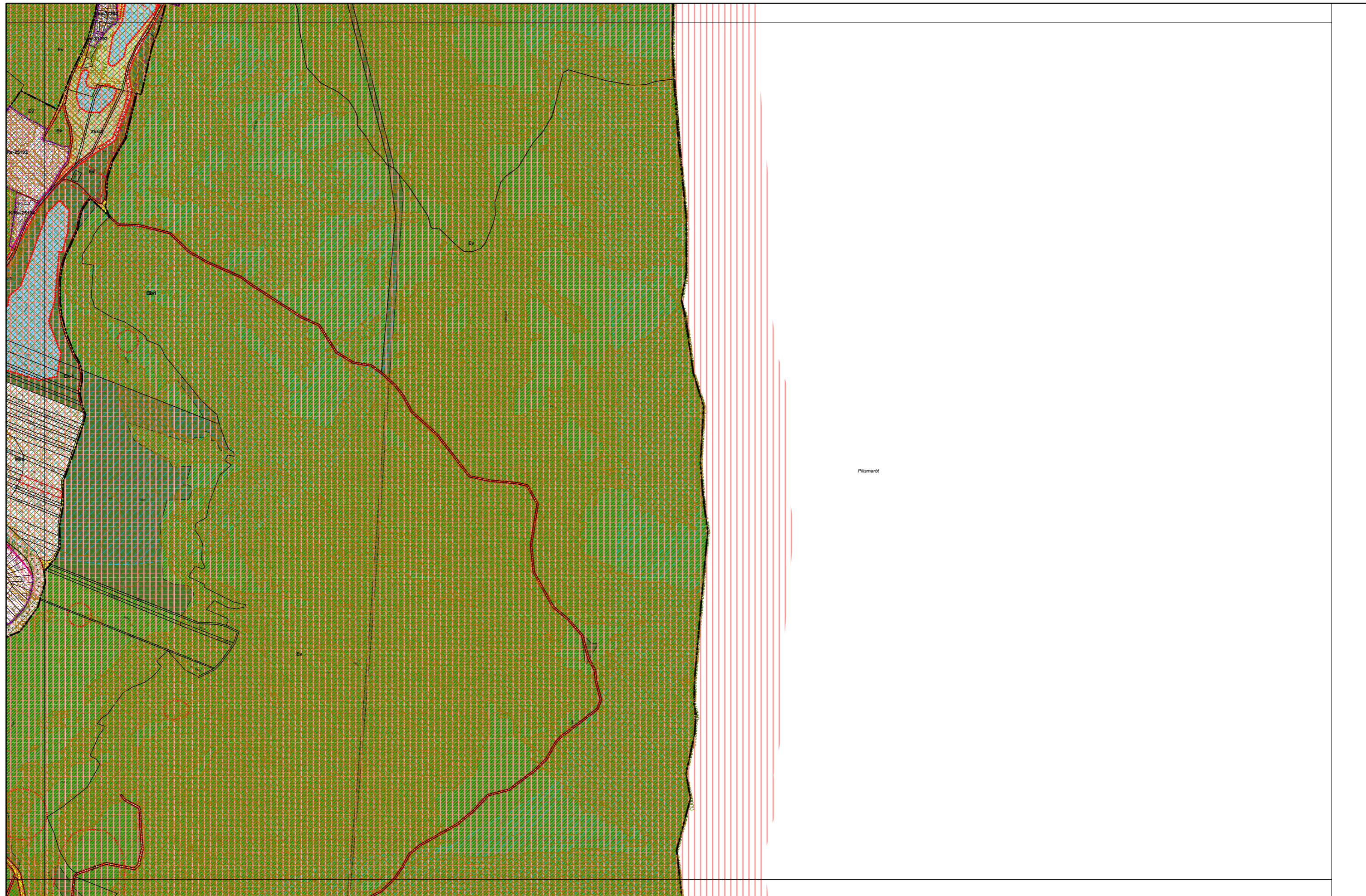
4. melléklet a 20/2019. (XI. 26.) önkormányzati rendelethez

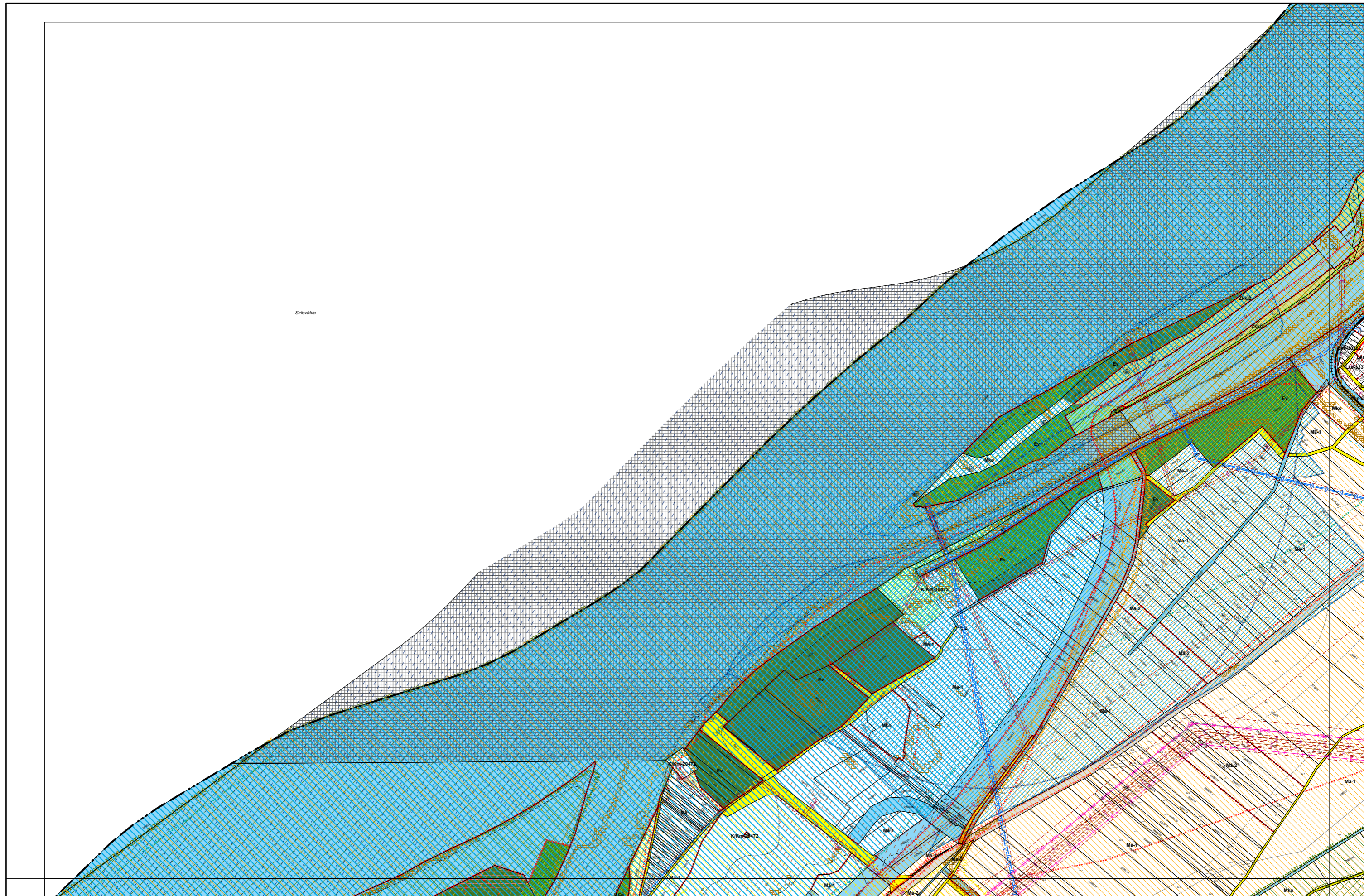
0 50 100 200 300 400 500 méter



4. melléklet a 20/2019. (XI. 26.) önkormányzati rendelethez

0 50 100 200 300 400 500 méter







4. melléklet a 20/2019. (XI. 26.) önkormányzati rendelethez

0 50 100 200 300 400 500 méter

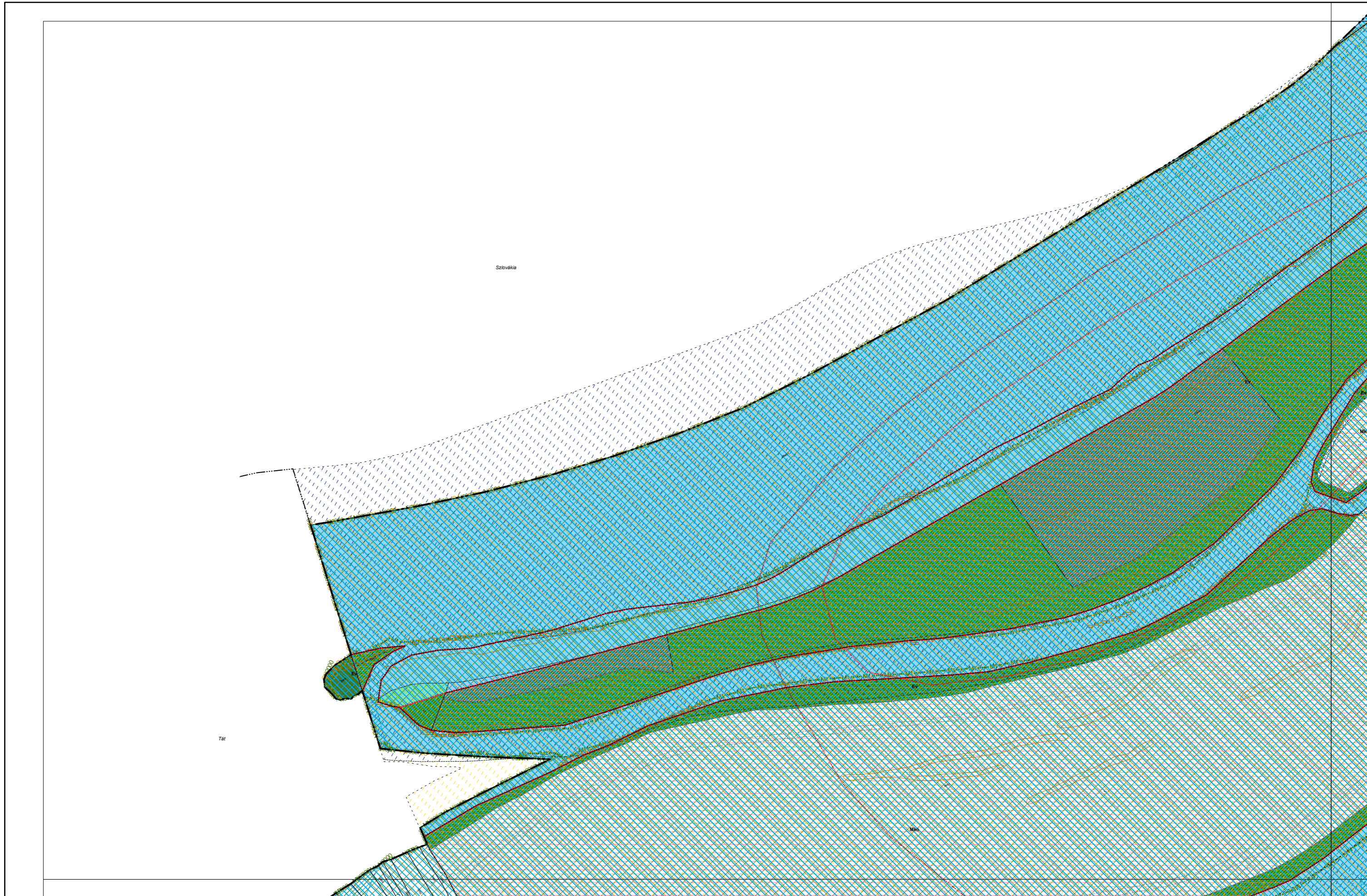


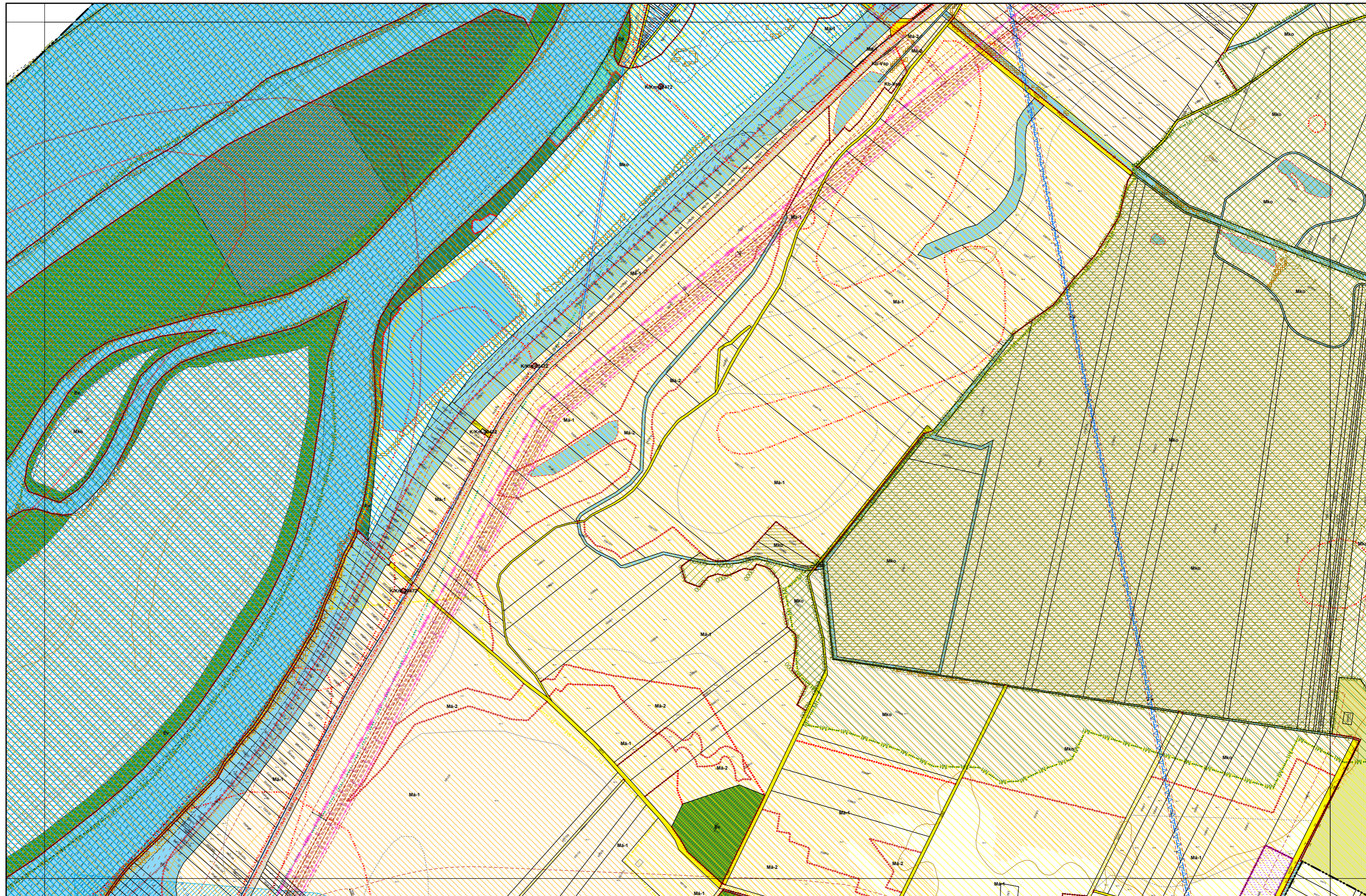
4. melléklet a 20/2019. (XI. 26.) önkormányzati rendelethez

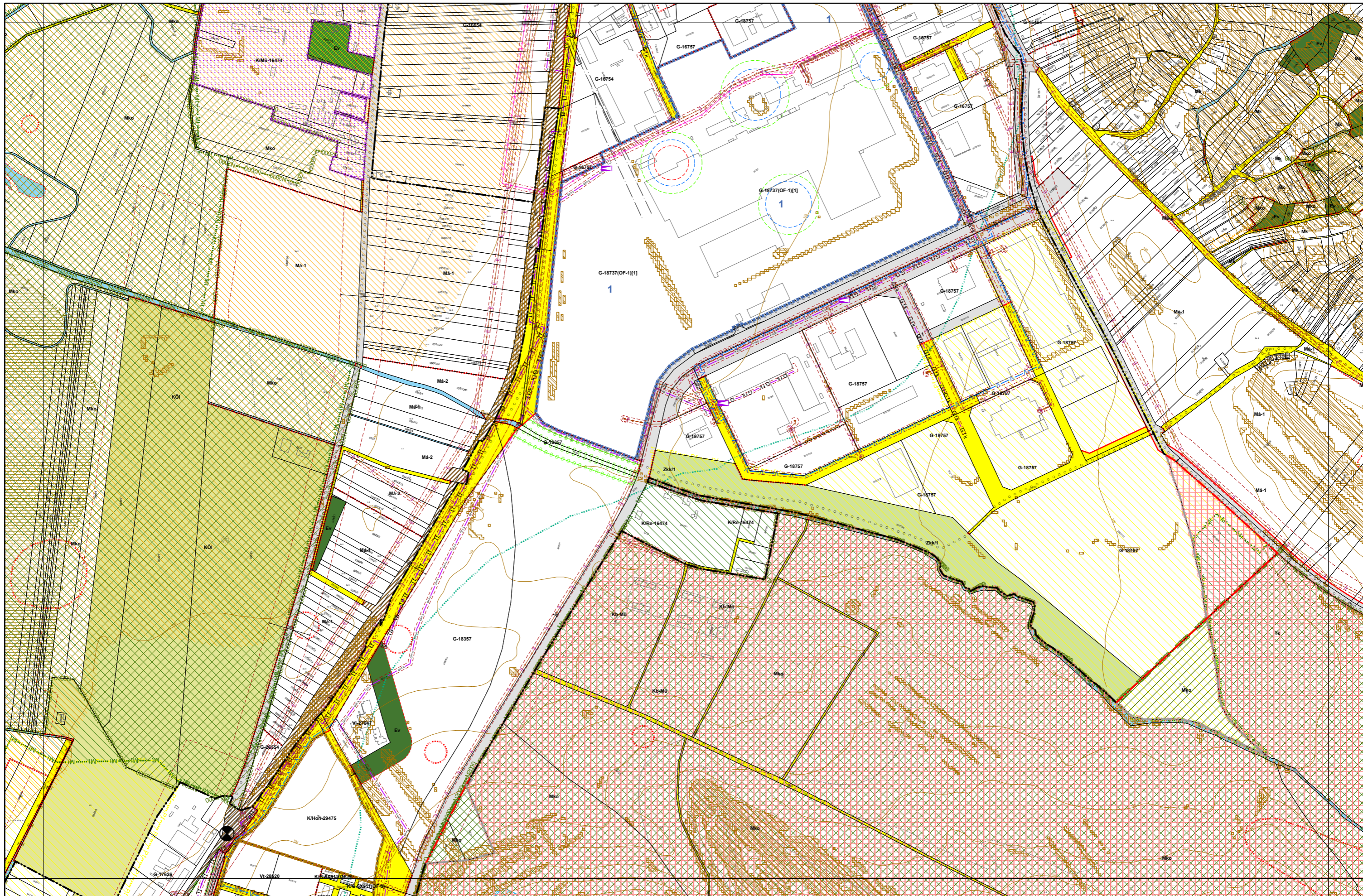
0 50 100 200 300 400 500 méter

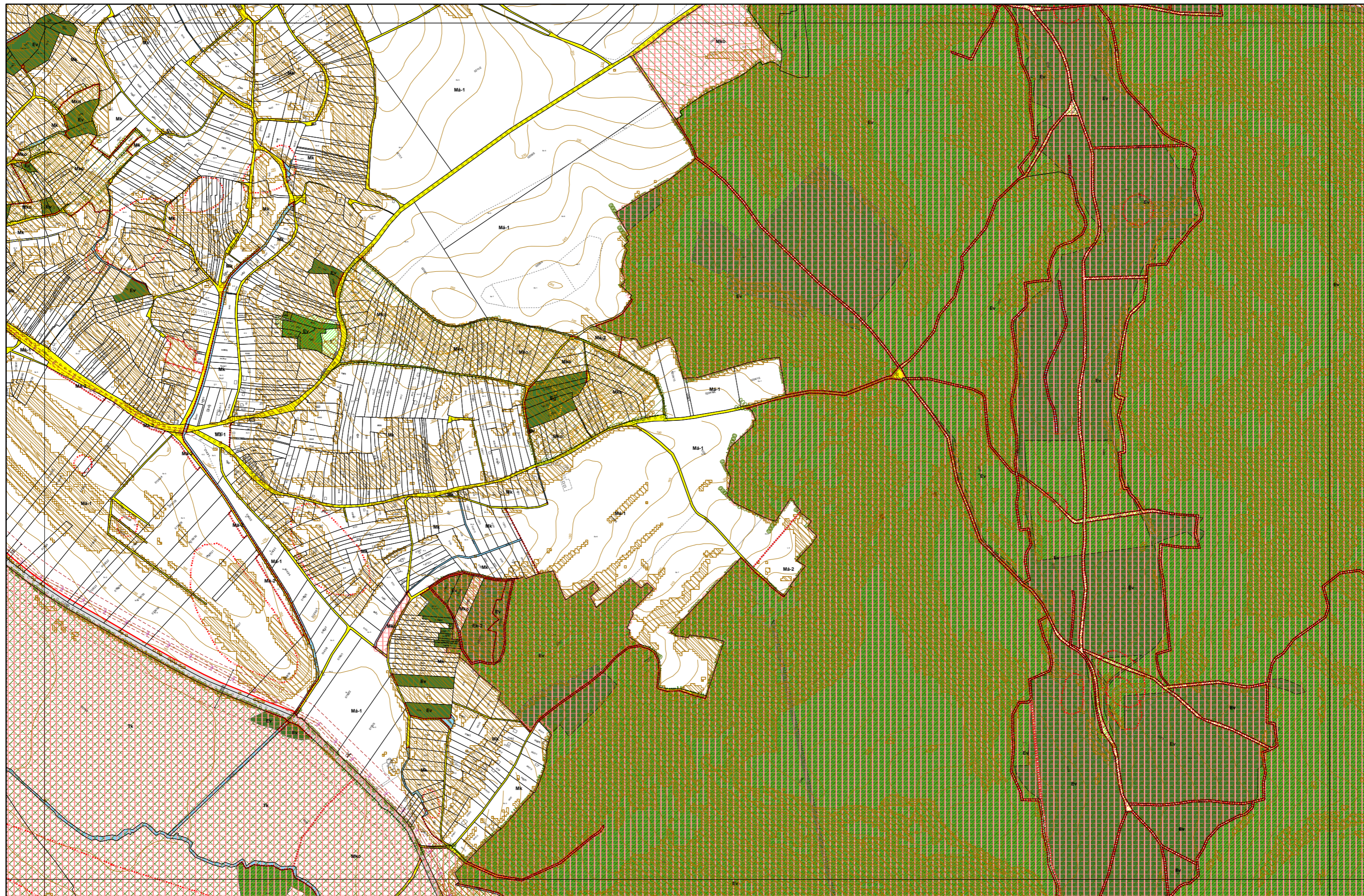


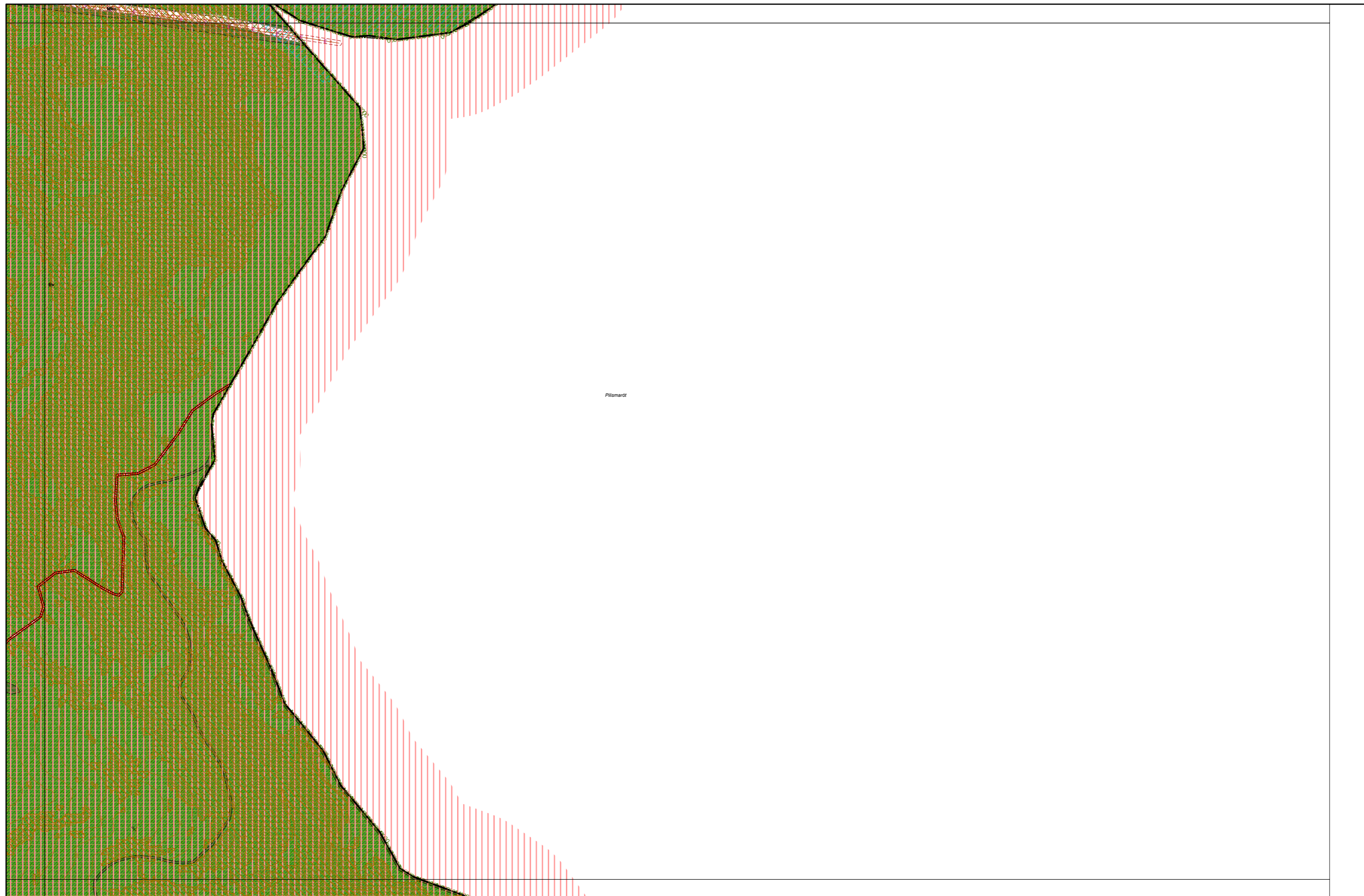
Pilismarót



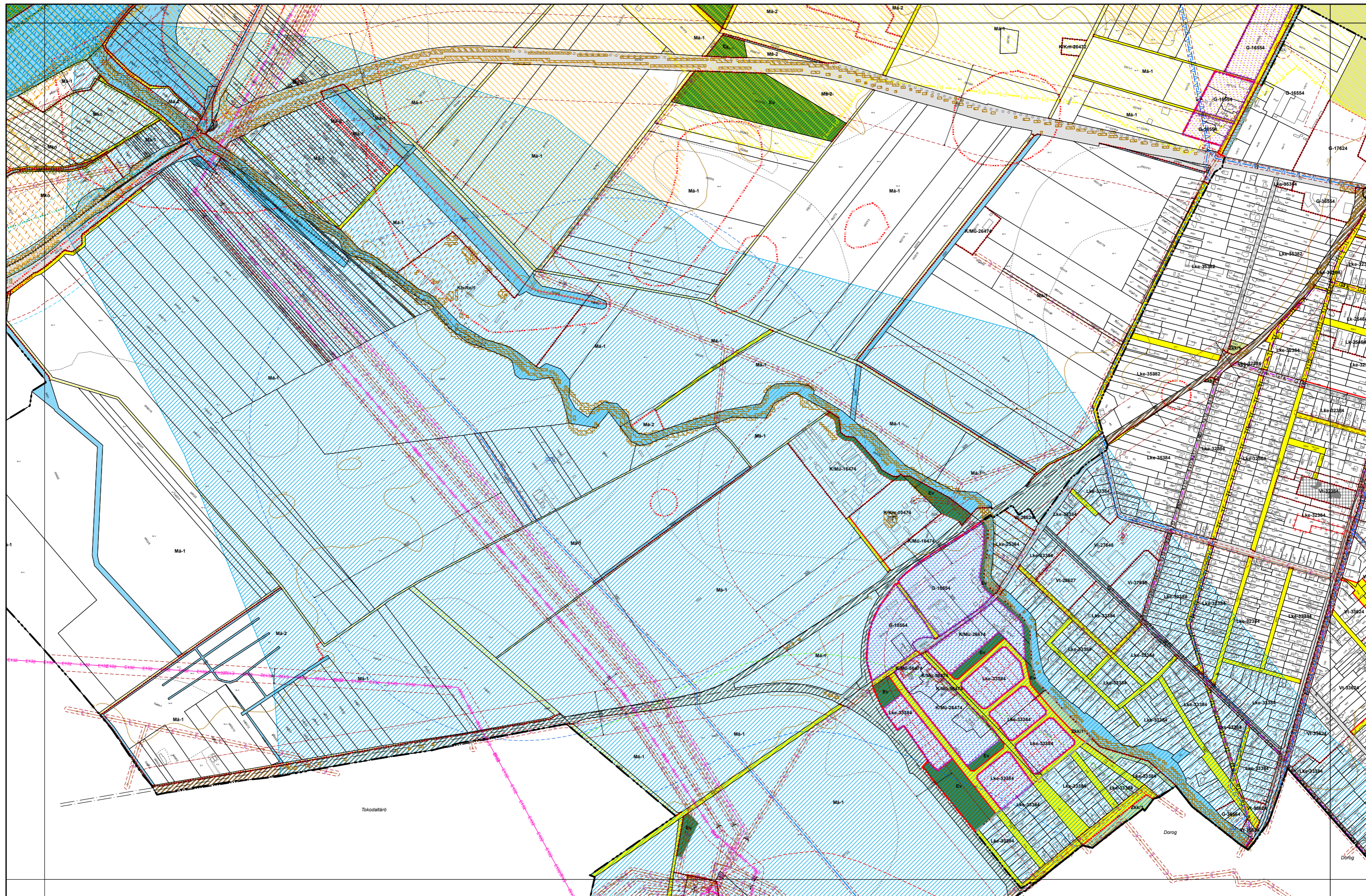






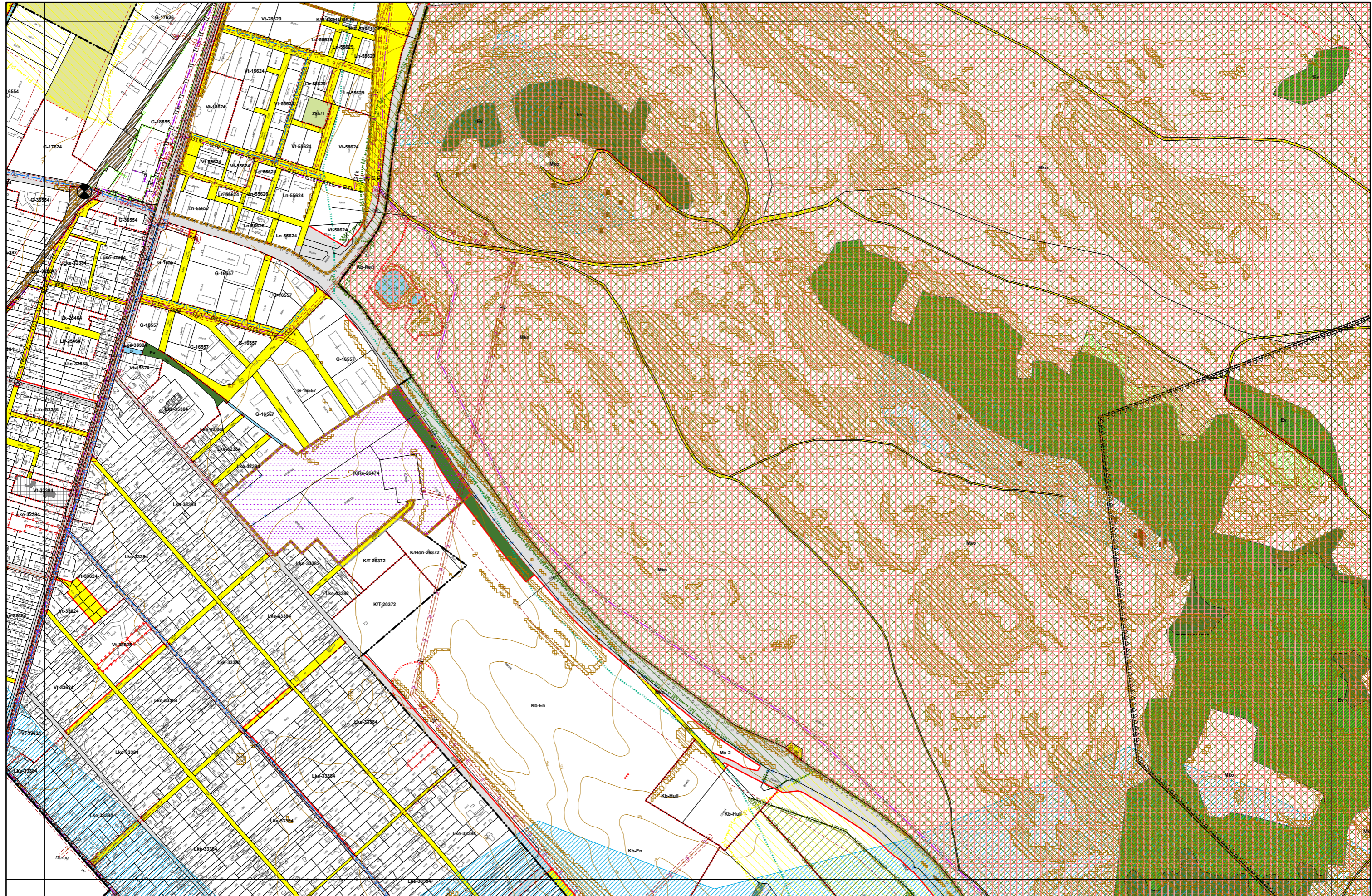




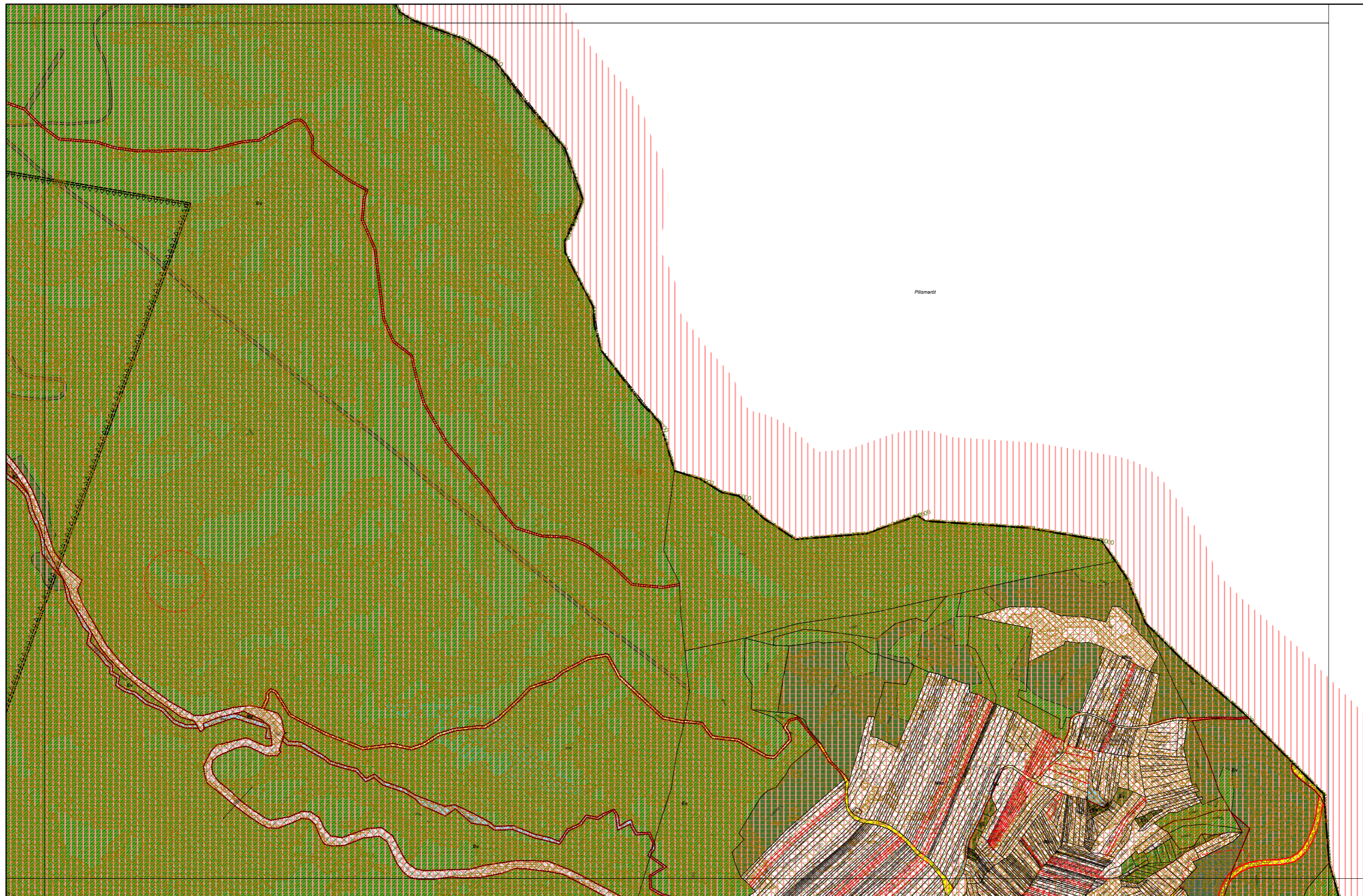


4. melléklet a 20/2019. (XI. 26.) önkormányzati rendelethez

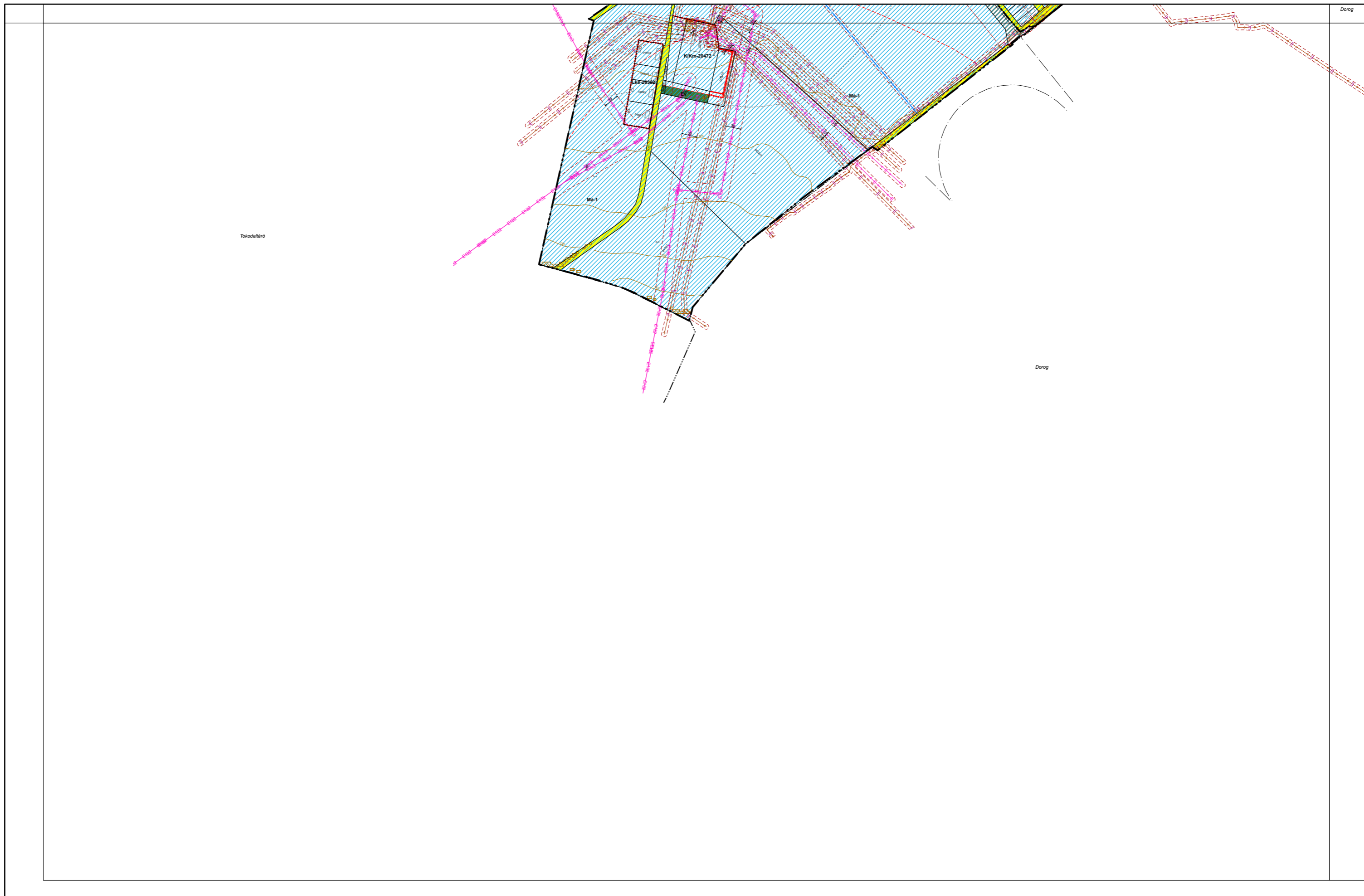
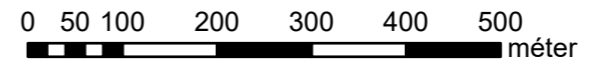
0 50 100 200 300 400 500 méter





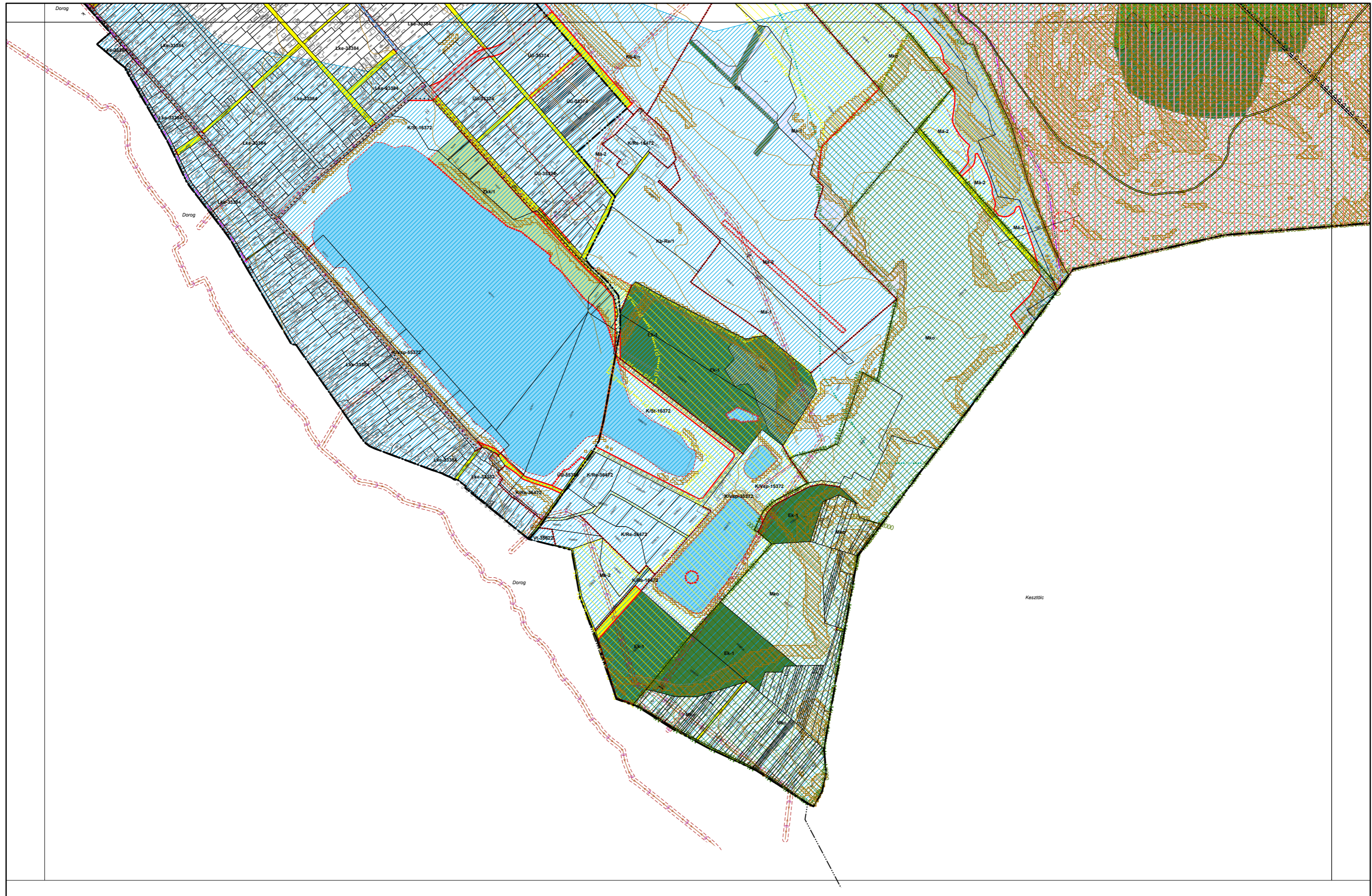


4. melléklet a 20/2019. (XI. 26.) önkormányzati rendelethez



4. melléklet a 20/2019. (XI. 26.) önkormányzati rendelethez

0 50 100 200 300 400 500 méter



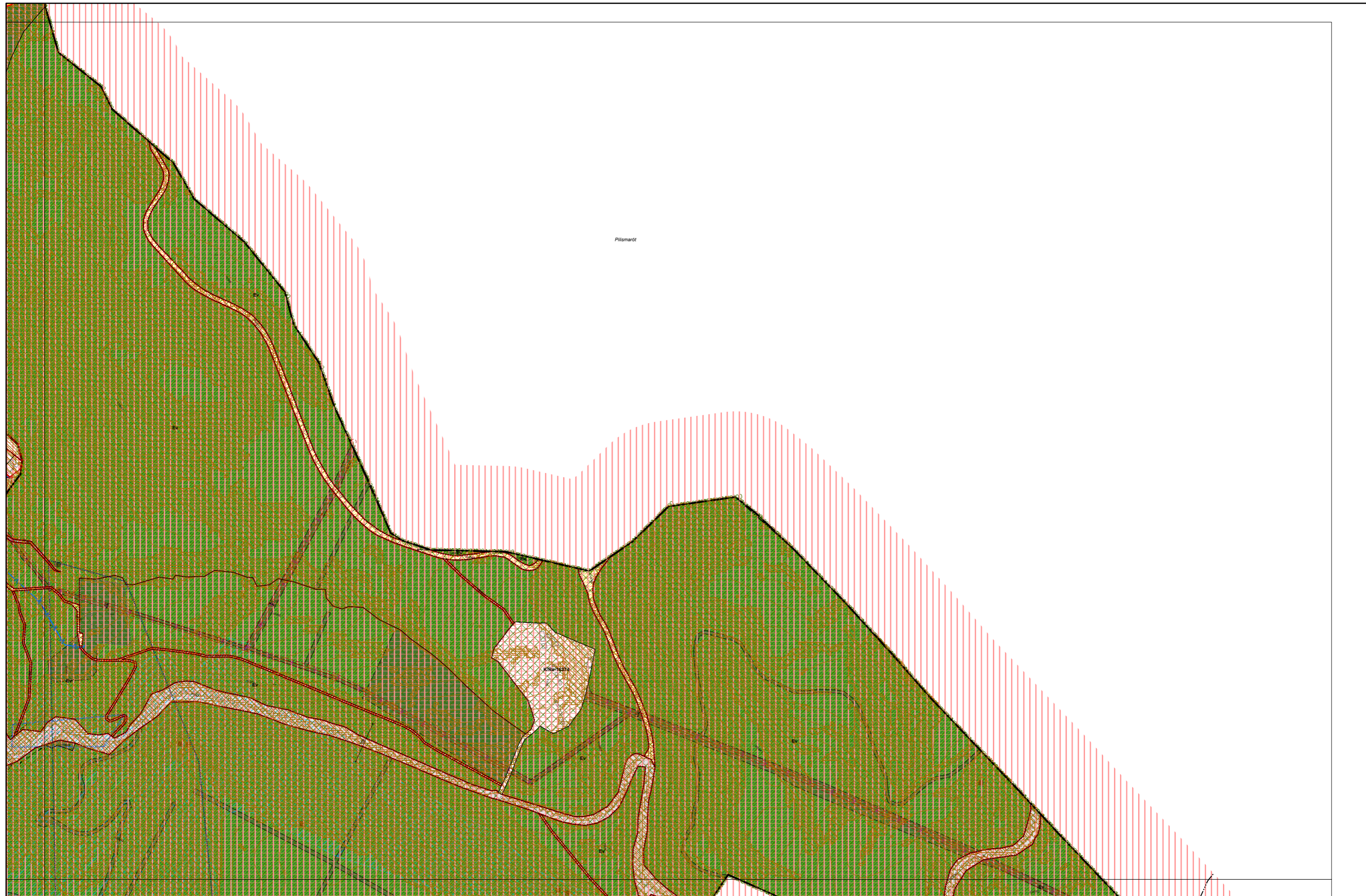
4. melléklet a 20/2019. (XI. 26.) önkormányzati rendelethez

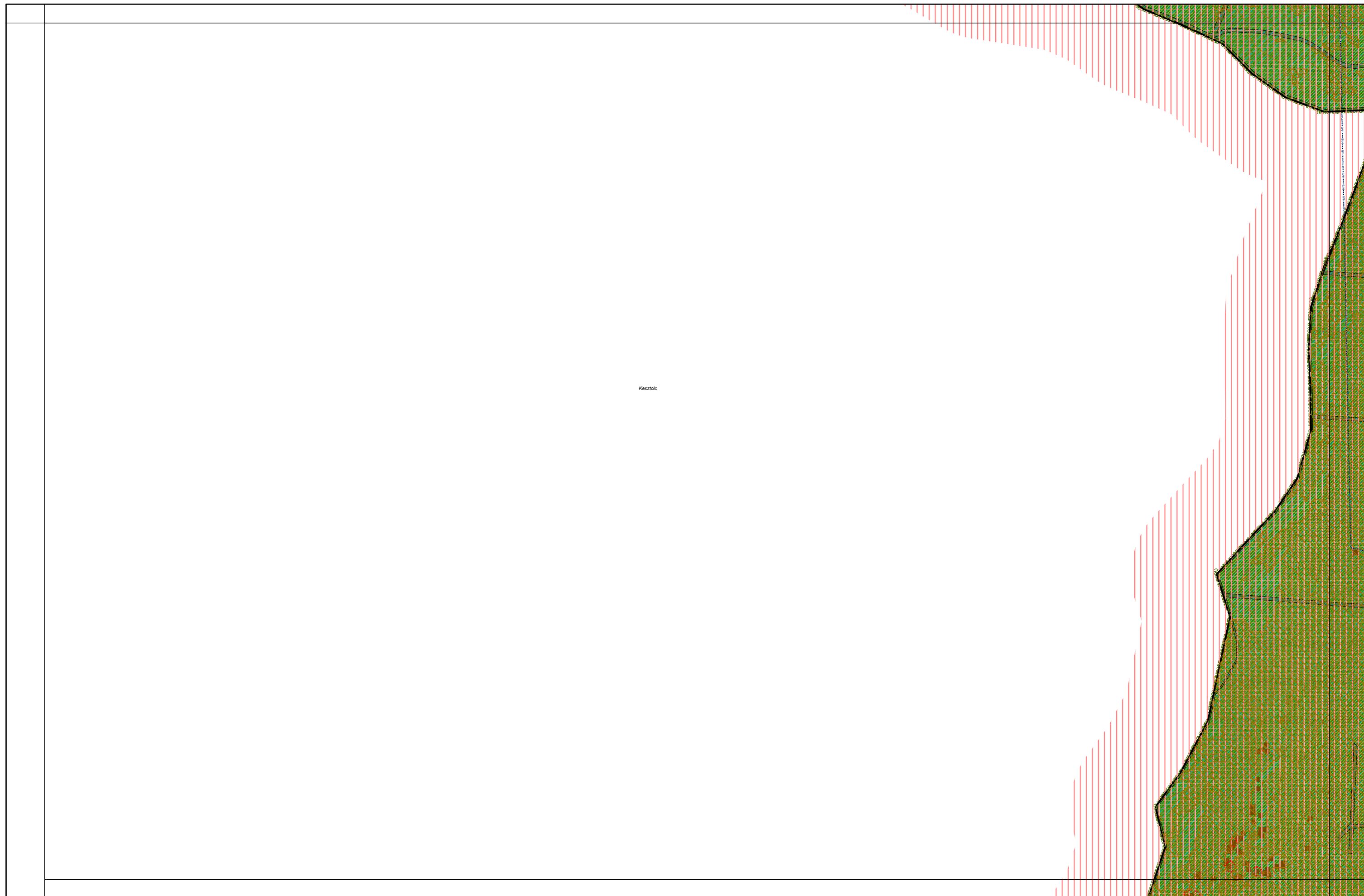
0 50 100 200 300 400 500 méter





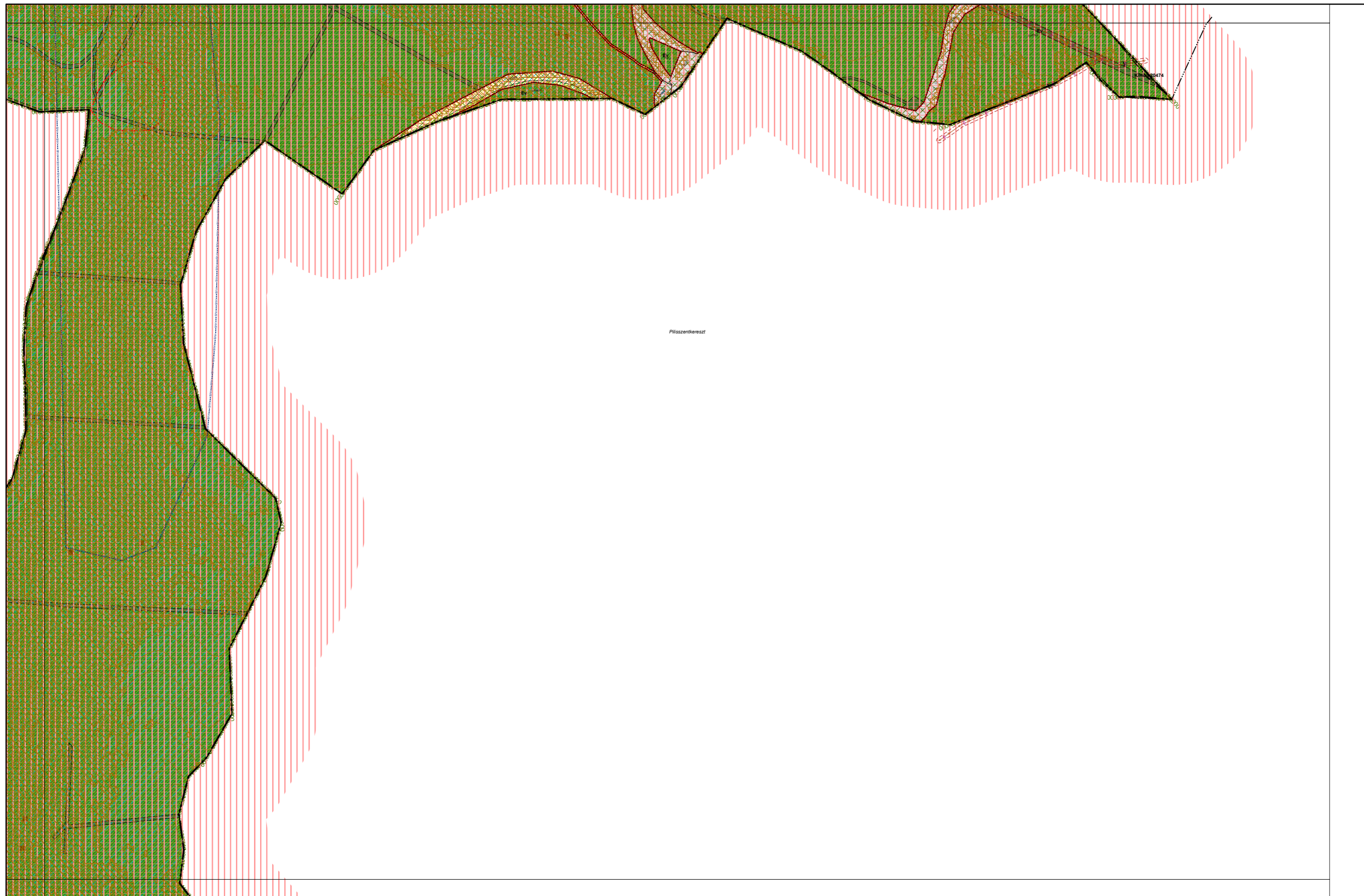
Készítő:



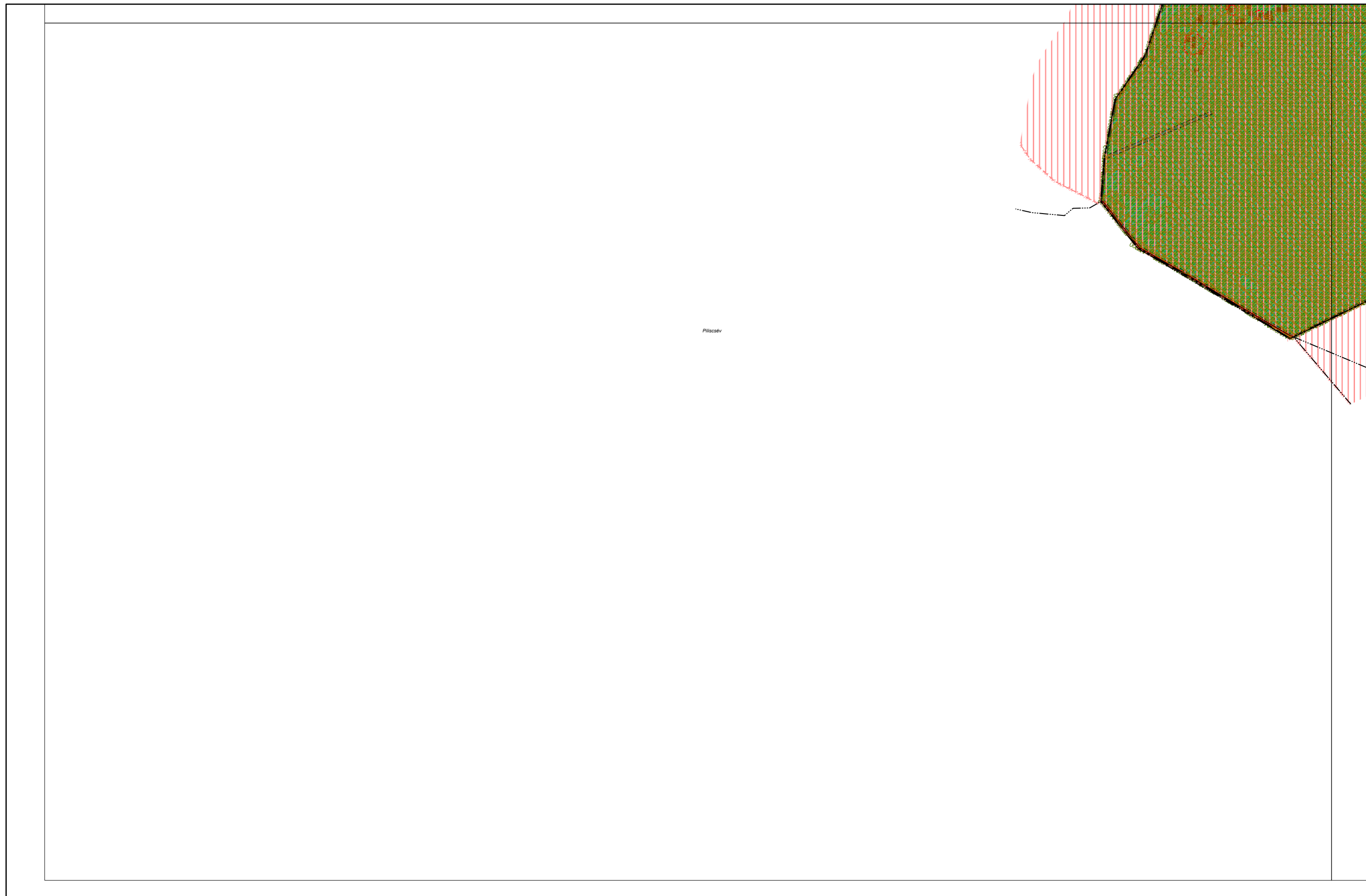
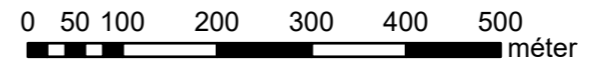


4. melléklet a 20/2019. (XI. 26.) önkormányzati rendelethez

0 50 100 200 300 400 500 méter



4. melléklet a 20/2019. (XI. 26.) önkormányzati rendelethez



4. melléklet a 20/2019. (XI. 26.) önkormányzati rendelethez

